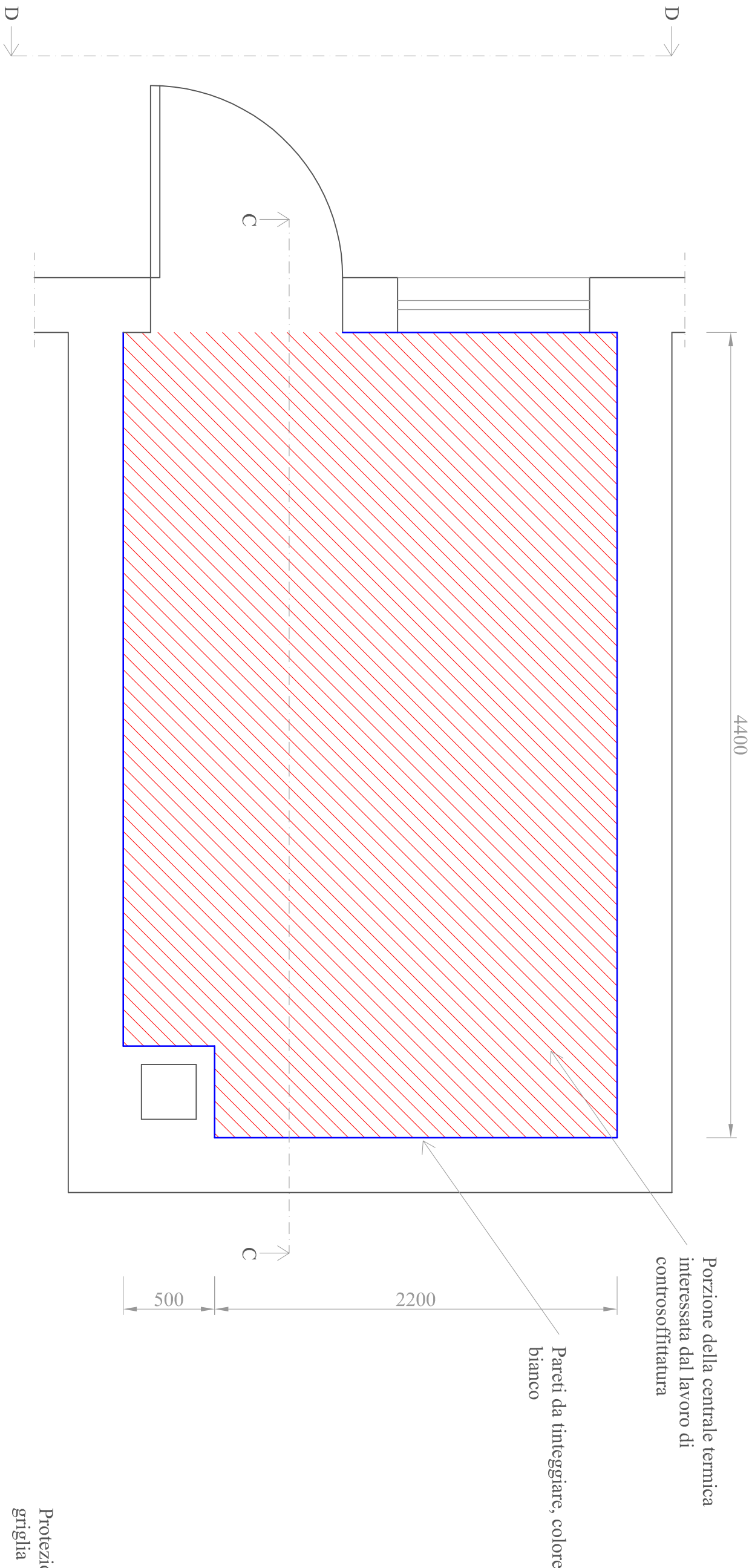
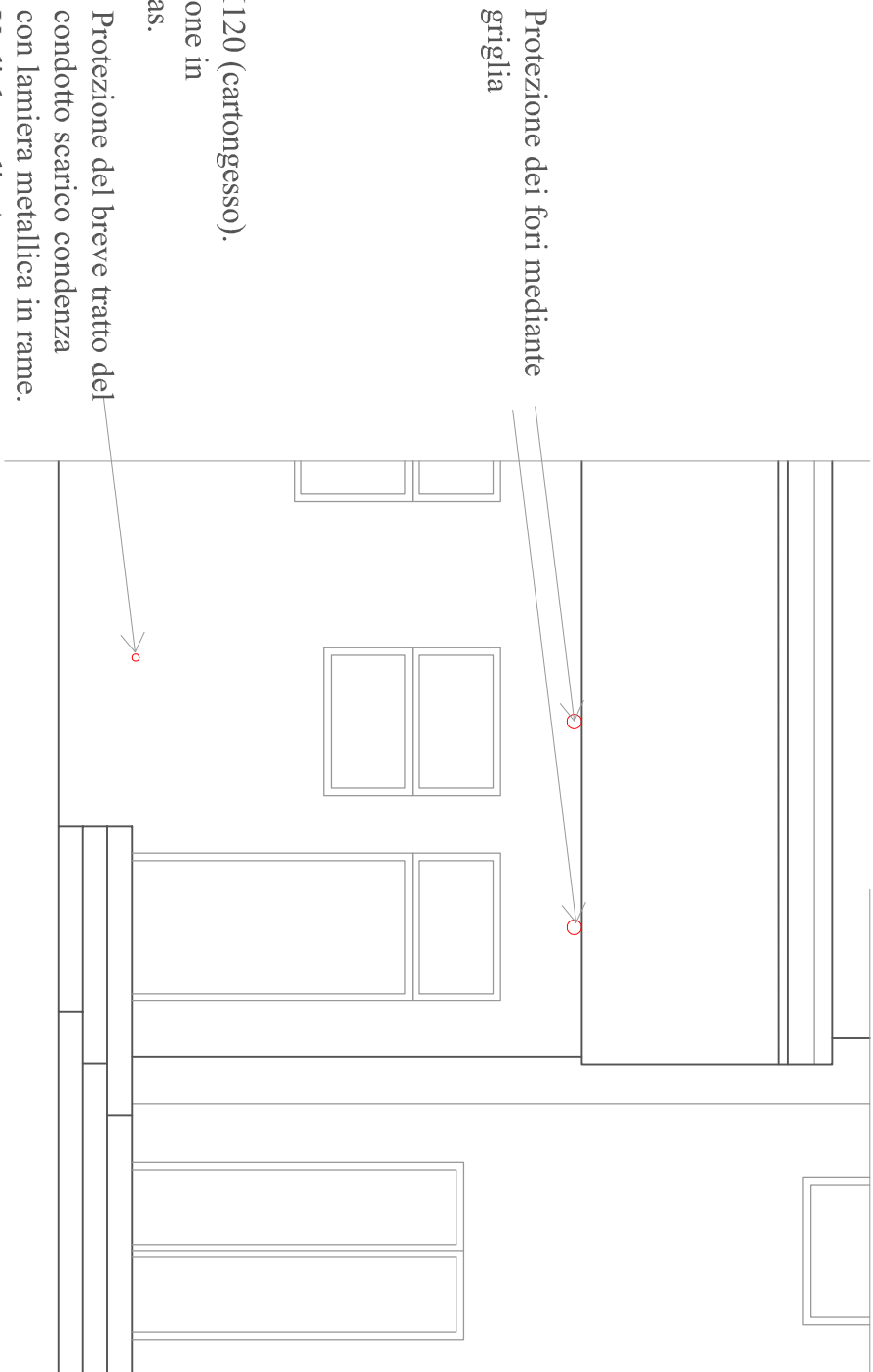


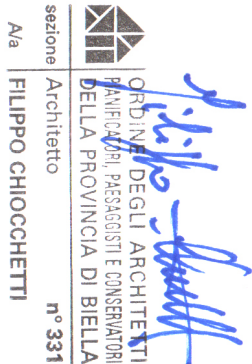
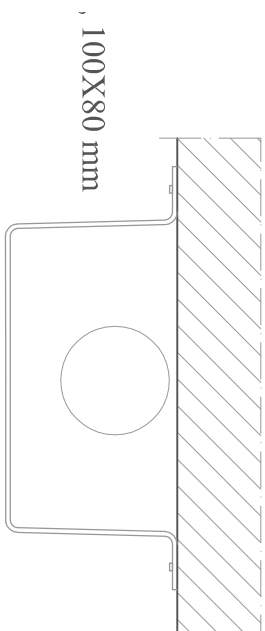
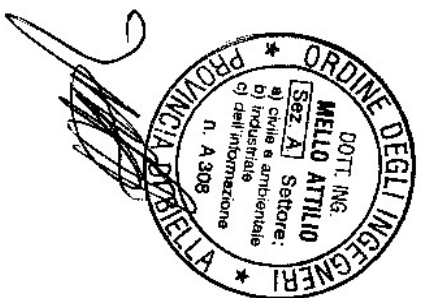
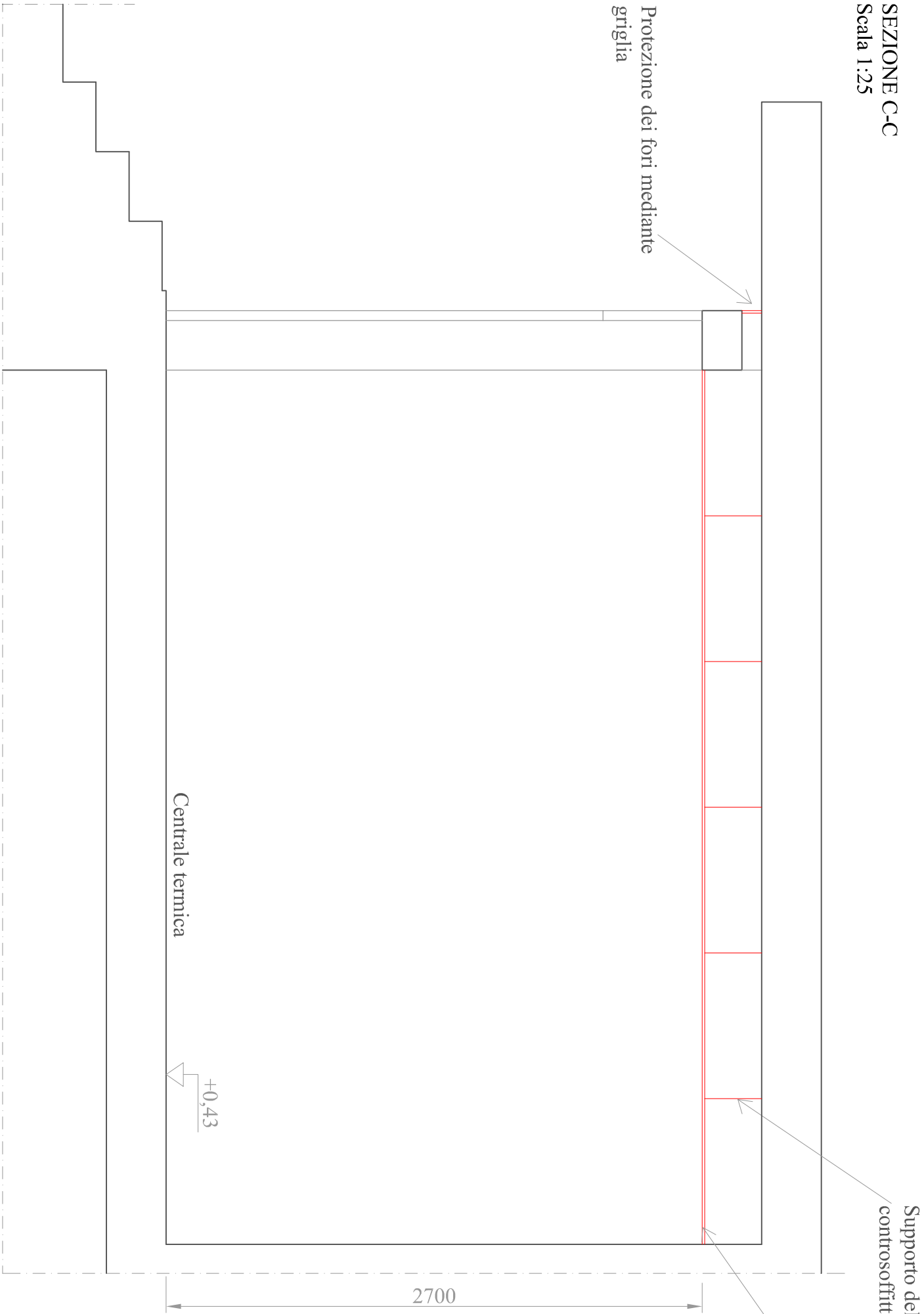
PIANTA CENTRALE TERMICA
Scala 1:25



SEZIONE D-D
Scala 1:50



SEZIONE C-C
Scala 1:25



Rev.

0	Esecutivo	N° Disegno: 03-VIG-PAL-18	Data: 26/11/2018
Oggetto: Riquadrificazione energetica e opere edili complementari presso la Palestra Comunale, via degli Alpini d'Italia 3, 13856 Vigliano Biellese (Bi) Realizzazione di controsoffittatura in cartongesso e forometrie			
Committente: Comune di Vigliano Biellese via Milano 234 13856 Vigliano Biellese (Bi)			architetto Filippo Chiochetti Via Costa di Riva 11 13900 Biella Tel: 0152523013 - 3357043639 info@filippochiochetti.it